

4

3

2

1

COVER

D

D

C

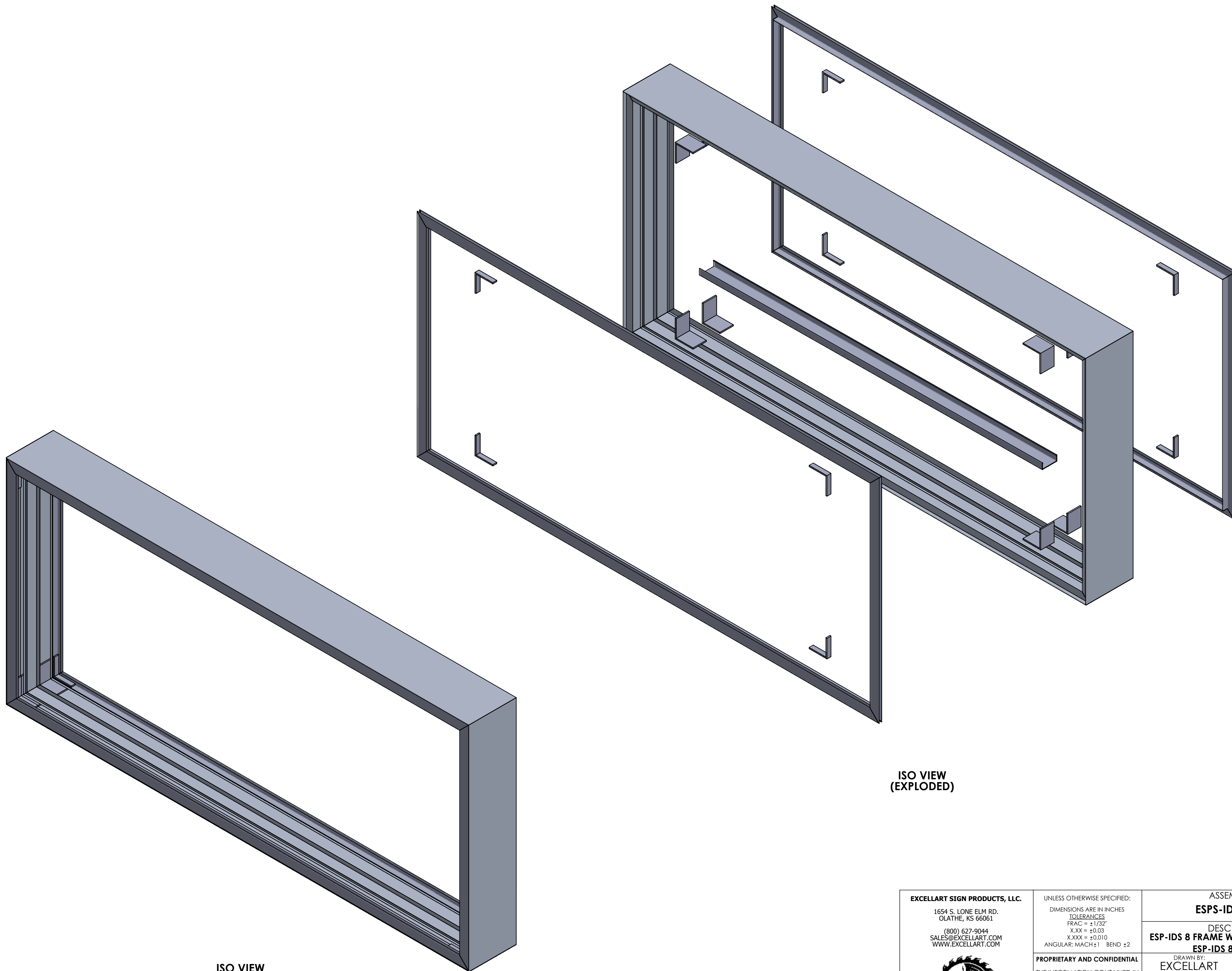
C

B

B

A

A



ISO VIEW (EXPLODED)

ISO VIEW

EXCELLART SIGN PRODUCTS, LLC.
 1654 S. LONE ELM RD.
 OLATHE, KS 66061

(800) 627-9044
 SALES@EXCELLART.COM
 WWW.EXCELLART.COM



UNLESS OTHERWISE SPECIFIED:
 DIMENSIONS ARE IN INCHES
 TOLERANCES
 FRAC = ± 1/32"
 X.XX = ±0.03
 X.XXX = ±0.010
 ANGULAR: MACH±1 BEND ±2

PROPRIETARY AND CONFIDENTIAL
 THE INFORMATION CONTAINED IN
 THIS DRAWING IS THE SOLE
 PROPERTY OF EXCELLART SIGN
 PRODUCTS, LLC. ANY
 REPRODUCTION IN PART OR AS A
 WHOLE WITHOUT THE WRITTEN
 PERMISSION OF EXCELLART SIGN
 PRODUCTS, LLC IS PROHIBITED.

ASSEMBLY ID:
ESPS-IDS8-IDSDF

DESCRIPTION:
**ESP-IDS 8 FRAME W. IDS RETAINERS AND
 ESP-IDS 8 RACEWAY**

DRAWN BY: EXCELLART APPROVED BY:

SIZE	Weight: 44.62 (lbs)	REV
C	Perimeter Length: 19 (ft)	-

SCALE: 1:8 12/22/2023 SHEET 1 OF 3

4

3

2

1

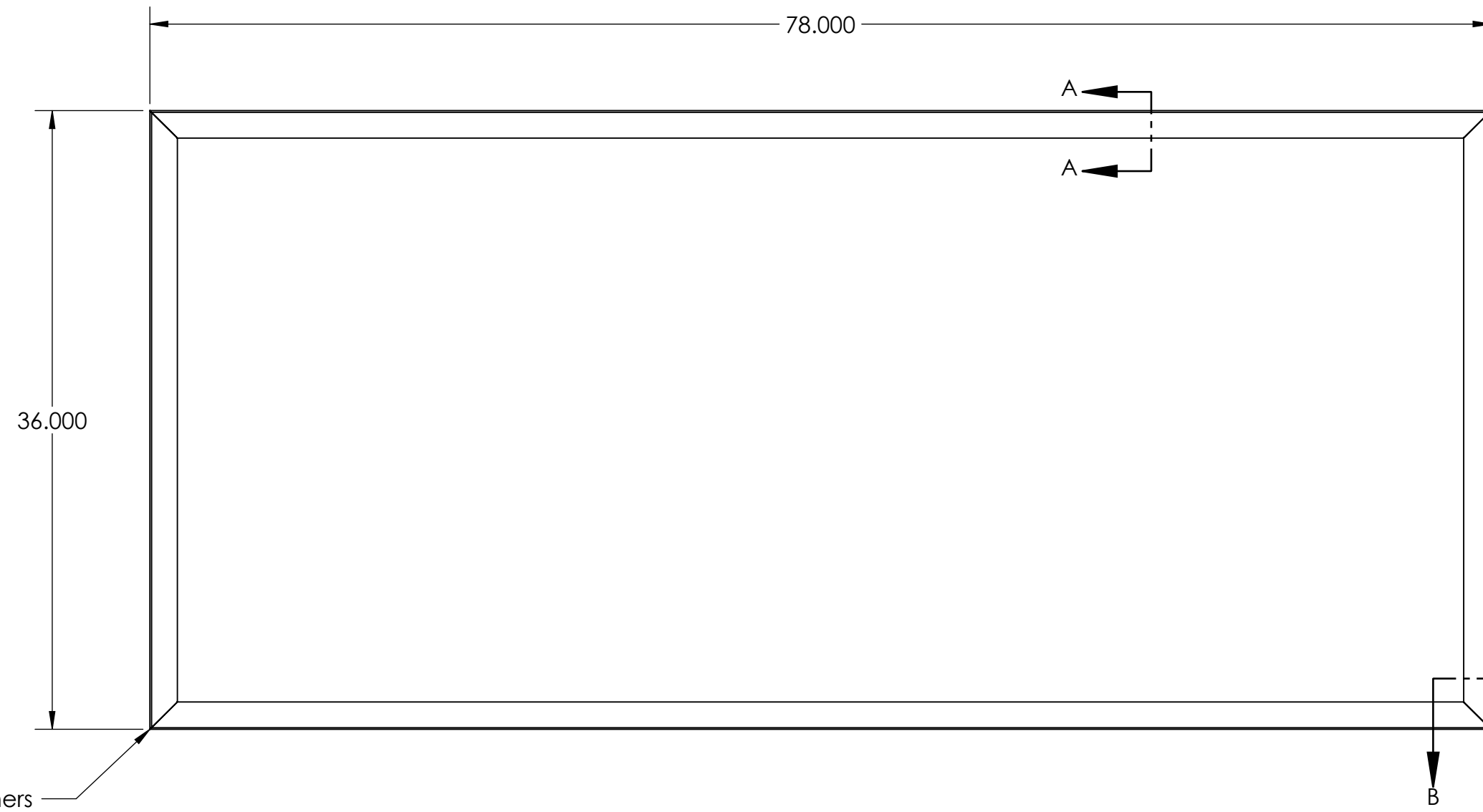
4

3

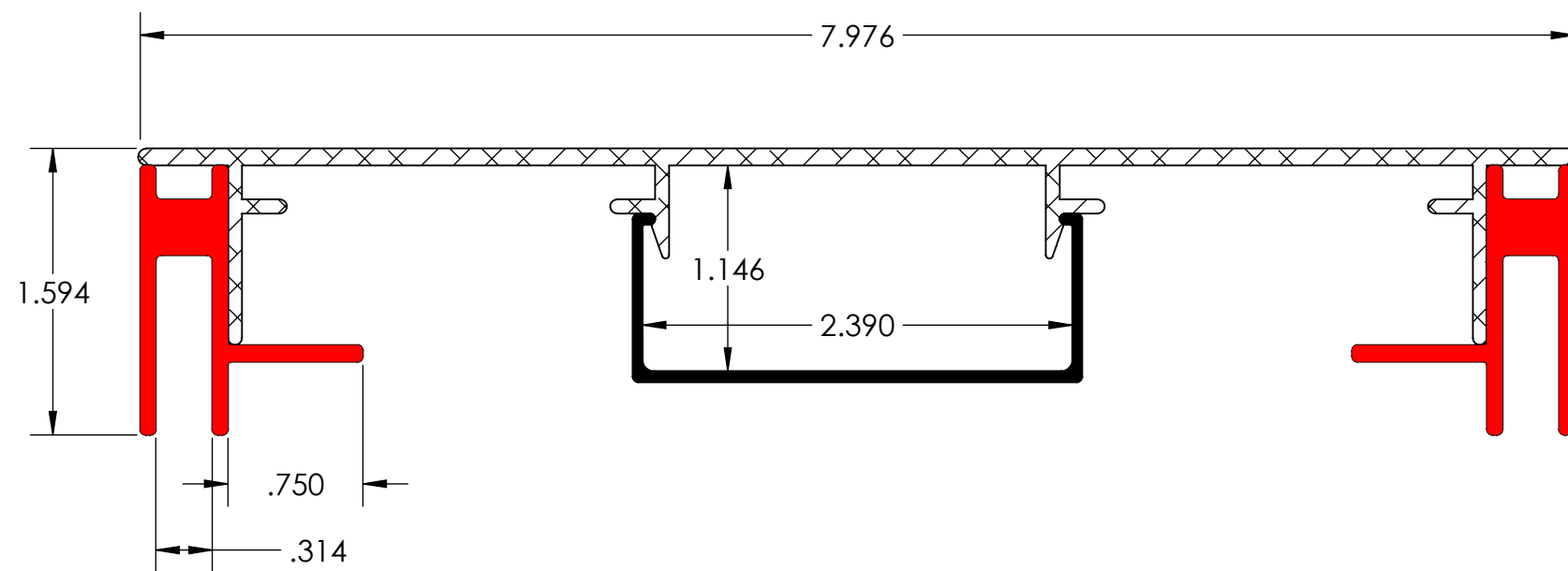
2

1

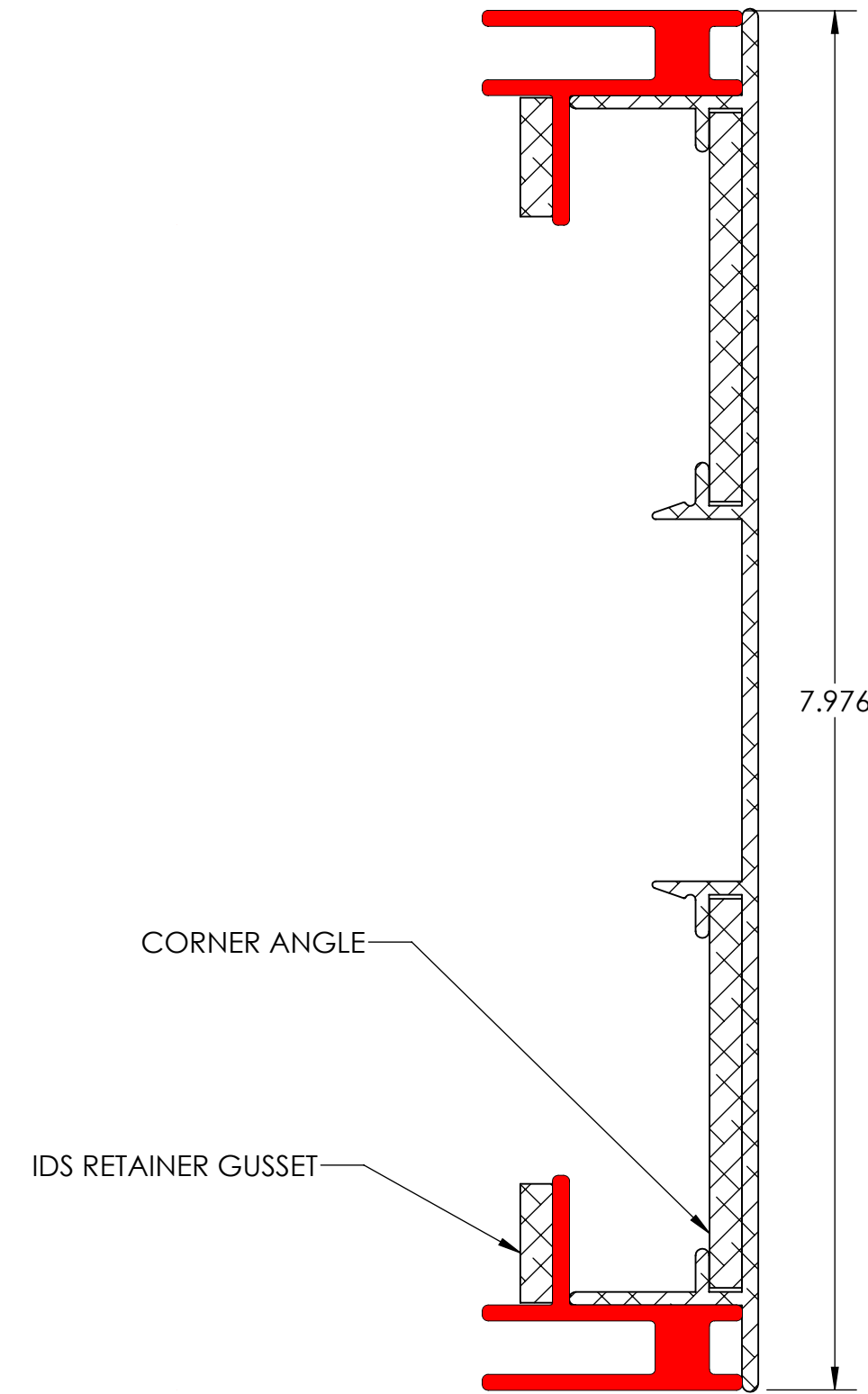
DIMS



FRONT VIEW



SECTION A-A
ESP-IDS 8 FRAME WITH IDS RETAINERS AND
IDS 8 RACEWAY
SCALE 1 : 1



SECTION B-B
ESP-IDS 8 FRAME WITH IDS RETAINERS
SCALE 1 : 1

EXCELLART SIGN PRODUCTS, LLC. 1654 S. LONE ELM RD. OLATHE, KS 66061 (800) 627-9044 SALES@EXCELLART.COM WWW.EXCELLART.COM	UNLESS OTHERWISE SPECIFIED: DIMENSIONS ARE IN INCHES TOLERANCES FRAC = ± 1/32" X.XX = ±0.03 X.XXX = ±0.010 ANGULAR: MACH±1 BEND ±2	ASSEMBLY ID: ESPS-IDS8-IDSDF	
		DESCRIPTION: ESP-IDS 8 FRAME W. IDS RETAINERS AND ESP-IDS 8 RACEWAY	
THE INFORMATION CONTAINED IN THIS DRAWING IS THE SOLE PROPERTY OF EXCELLART SIGN PRODUCTS, LLC. ANY REPRODUCTION IN PART OR AS A WHOLE WITHOUT THE WRITTEN PERMISSION OF EXCELLART SIGN PRODUCTS, LLC IS PROHIBITED.	PROPRIETARY AND CONFIDENTIAL	DRAWN BY: EXCELLART	APPROVED BY:
	SIZE C	Weight: 44.62 (lbs)	REV
	SCALE: 1:8	12/22/2023	SHEET 2 OF 3

4

3

2

1

A

A

B

B

C

C

D

D

4

3

2

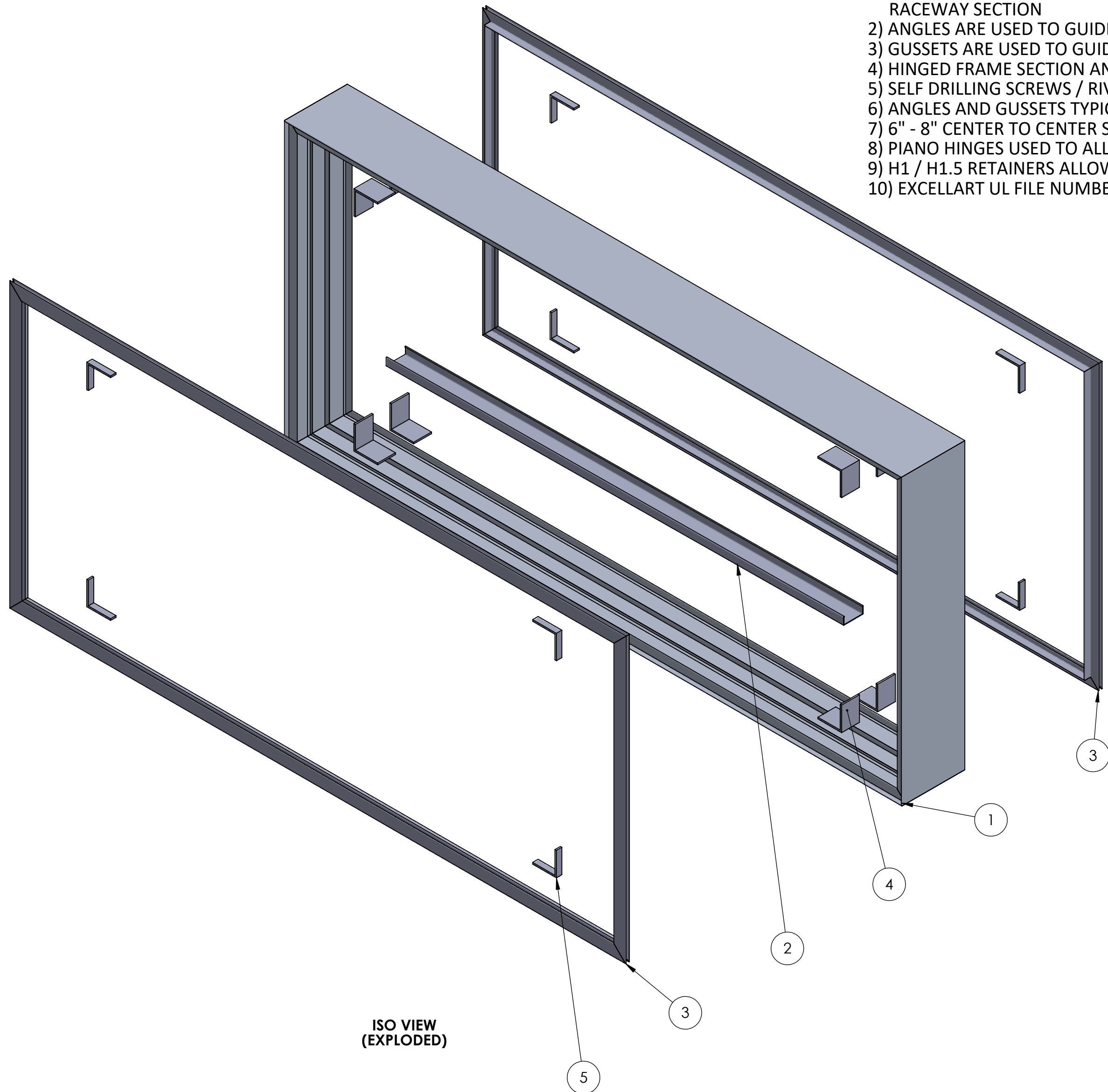
1

BOM

ITEM NO.	PART NUMBER	DESCRIPTION	MATERIAL	QTY.
1	ESP1280900	ESP-IDS 12 FRAME	6063-T6	1
2	ESP1280902	ESP-IDS 12 RACEWAY	6063-T6	1
3	ESP1280906	ESP-IDS RETAINER	6063-T6	2
4	ESP1280123	3 11/16" X 3" X 3" X 3/16" ANGLE	6063-T6	8
5	ESP1280904	11/16" X 3" X 3" X 3/16" GUSSET	6063-T6	8

NOTES:

- 1) ESP-IDS 8 KIT WITH IDS RETAINERS AND ESP-IDS 8 RACEWAY CONSISTS OF QTY (4) ESP-IDS 8 FRAME PIECES, QTY (8) CORNER ANGLES, QTY (8) ESP-IDS RETAINER PIECES, QTY (8) ESP-IDS RETAINER GUSSETS, AND QTY (1) ESP-IDS 8 RACEWAY SECTION
- 2) ANGLES ARE USED TO GUIDE FRAME PIECES INTO POSITION
- 3) GUSSETS ARE USED TO GUIDE RETAINER PIECES INTO POSITION (IF APPLICABLE)
- 4) HINGED FRAME SECTION AND HINGED RETAINERS SHOWN TO BE ON TOP OF SIGN CABINET (IF APPLICABLE)
- 5) SELF DRILLING SCREWS / RIVETS / LOCK CYLINDERS ETC (BY OTHERS) TO SECURE RETAINERS AS NEEDED
- 6) ANGLES AND GUSSETS TYPICALLY WELDED TO FRAMING (BY OTHERS)
- 7) 6" - 8" CENTER TO CENTER SPACING RECOMMENDED FOR FLEX CLIPS
- 8) PIANO HINGES USED TO ALLOW IDS RETAINERS TO HINGE OPEN (IF APPLICABLE)
- 9) H1 / H1.5 RETAINERS ALLOW SECONDARY FACE TO BE MOUNTED BEHIND PRIMARY FACE
- 10) EXCELLART UL FILE NUMBER: E152309



ISO VIEW (EXPLODED)

EXCELLART SIGN PRODUCTS, LLC. 1654 S. LONE ELM RD. OLATHE, KS 66061 (800) 627-9044 SALES@EXCELLART.COM WWW.EXCELLART.COM	UNLESS OTHERWISE SPECIFIED: DIMENSIONS ARE IN INCHES TOLERANCES FRAC = ± 1/32" X.XX = ± 0.03 X.XXX = ± 0.010 ANGULAR: MACH ± 1 BEND ± 2	ASSEMBLY ID: ESPS-IDS8-IDSDF		
		DESCRIPTION: ESP-IDS 8 FRAME W. IDS RETAINERS AND ESP-IDS 8 RACEWAY		
EXCELLART <small>THE INFORMATION CONTAINED IN THIS DRAWING IS THE SOLE PROPERTY OF EXCELLART SIGN PRODUCTS, LLC. ANY REPRODUCTION IN PART OR AS A WHOLE WITHOUT THE WRITTEN PERMISSION OF EXCELLART SIGN PRODUCTS, LLC IS PROHIBITED.</small>	PROPRIETARY AND CONFIDENTIAL	DRAWN BY: EXCELLART	APPROVED BY:	
	SIZE C	Weight: 44.62 (lbs) Perimeter Length: 19 (ft)	REV -	SCALE: 1:8 12/22/2023 SHEET 3 OF 3

4

3

2

1