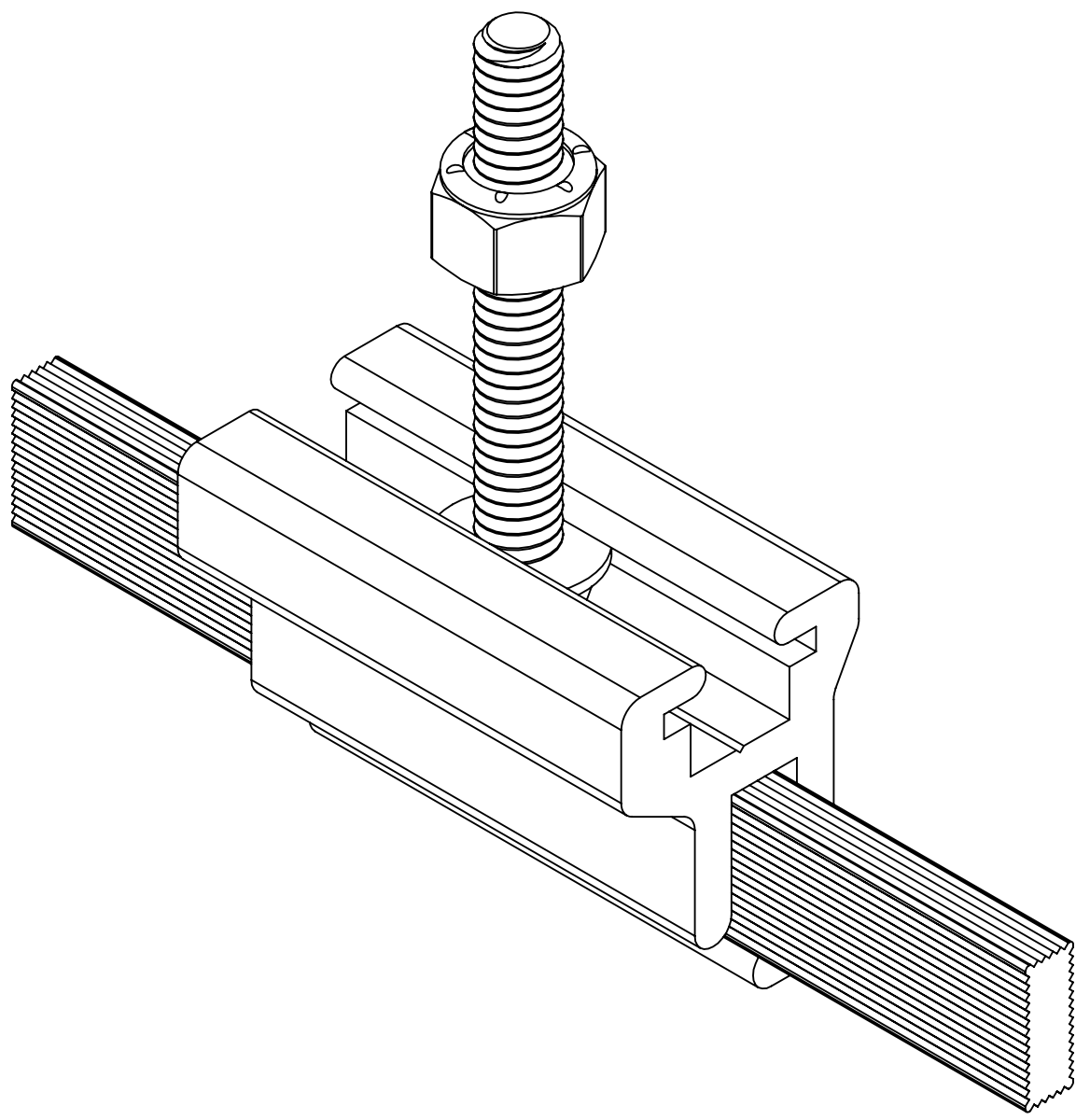
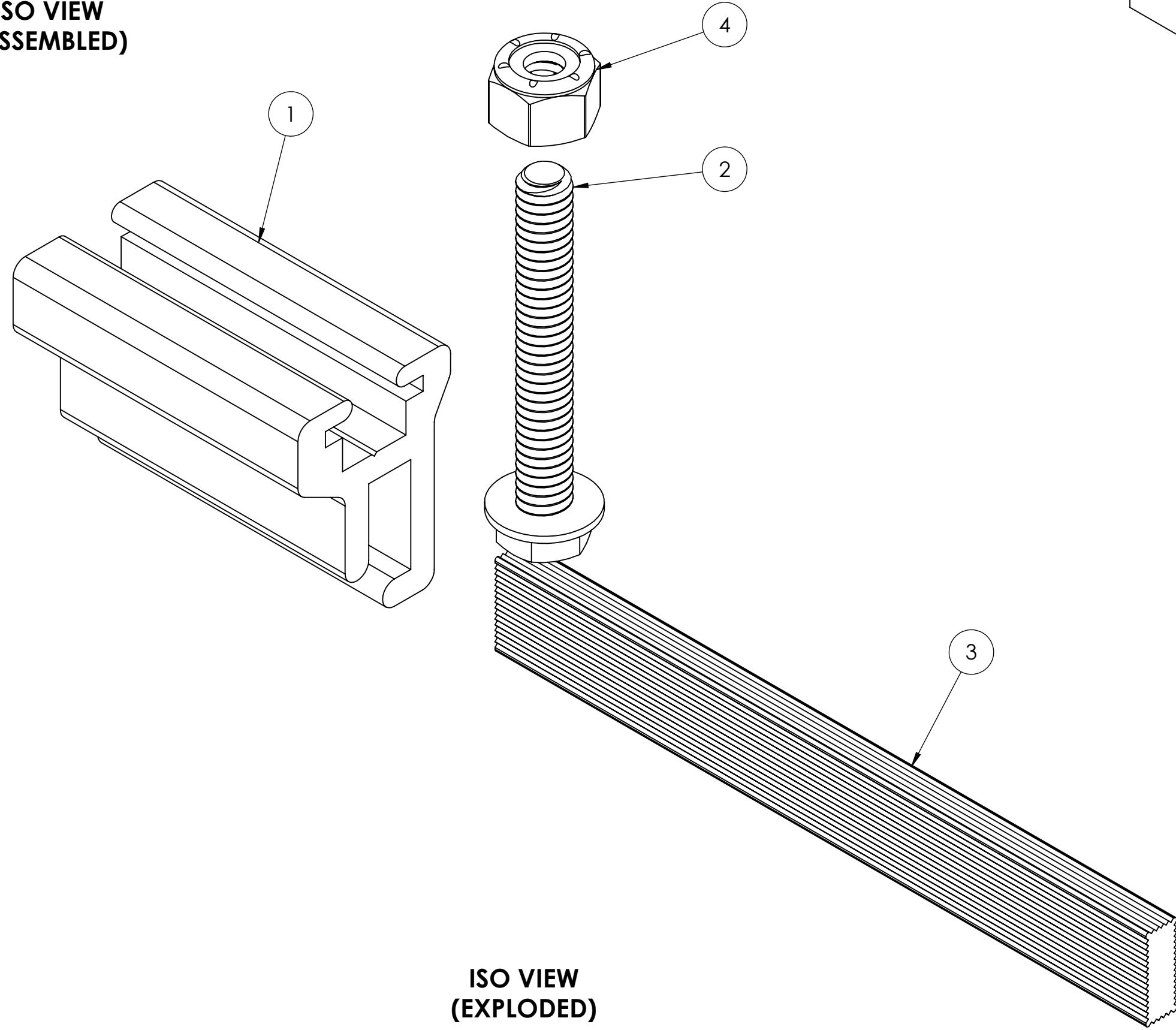


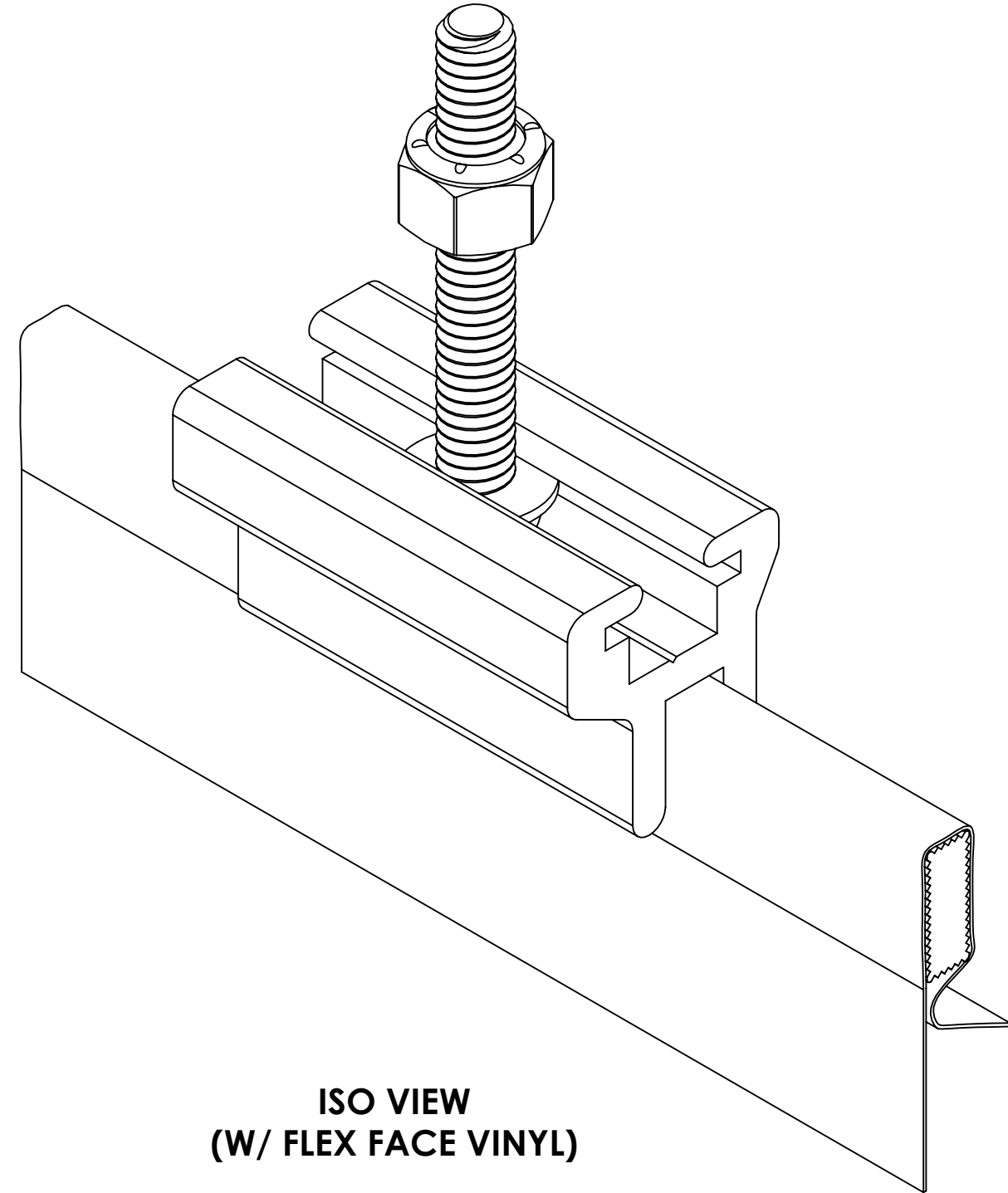
ITEM NO.	PART NUMBER	DESCRIPTION	QTY.
1	ESP1280402A	UNIVERSAL FLEX CLIP - TENSION BAR HOLDER	1
2	ESP1280003	1/4"-20 X 1.5"-1.75" FLANGE HEAD MACHINE SCREW	1
3	ESP1280406	FLEX CLIP - TENSION BAR	1
4	ESP1280004	1/4"-20 LOCK NUT	1




ISO VIEW
(ASSEMBLED)

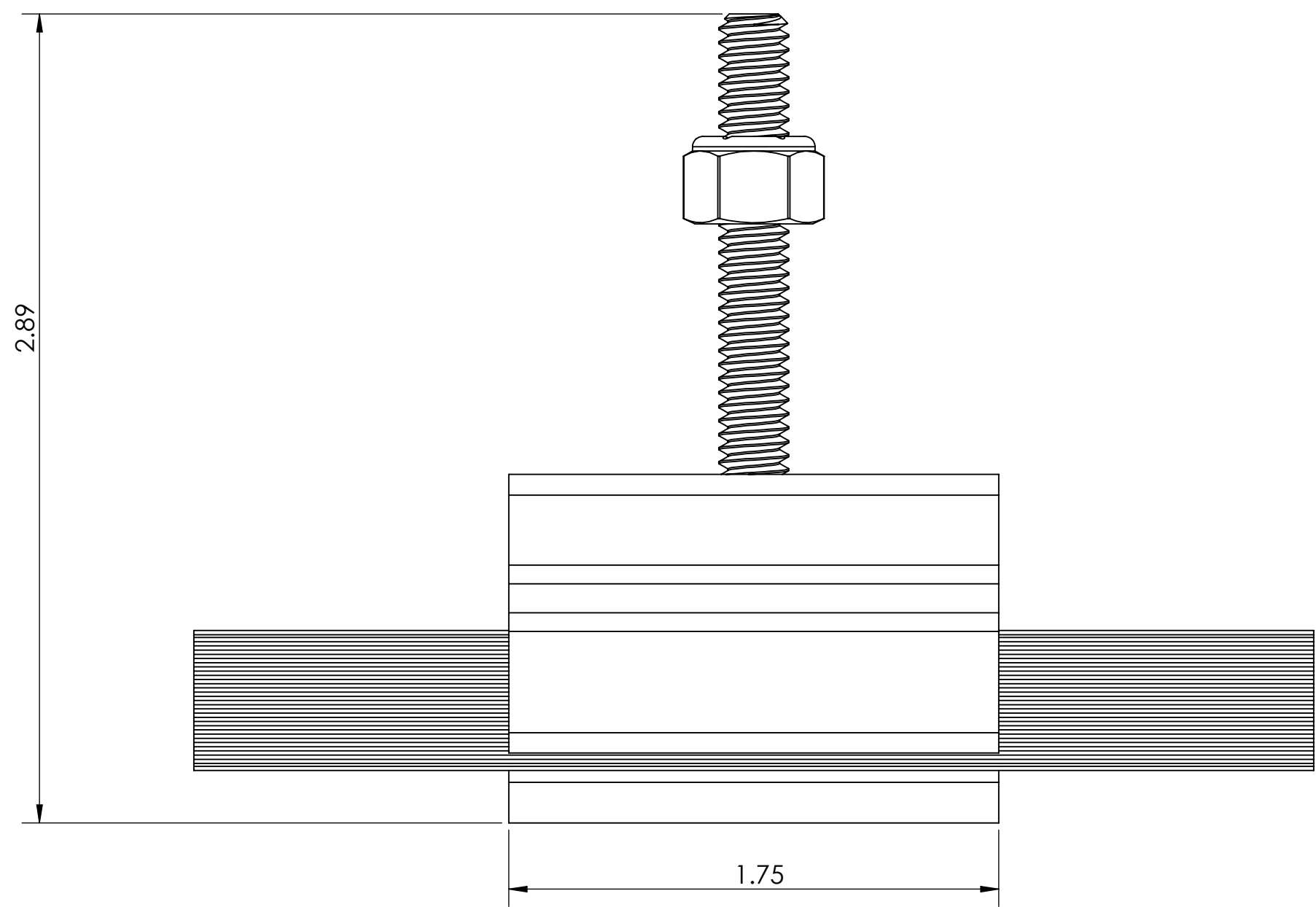


ISO VIEW
(EXPLODED)

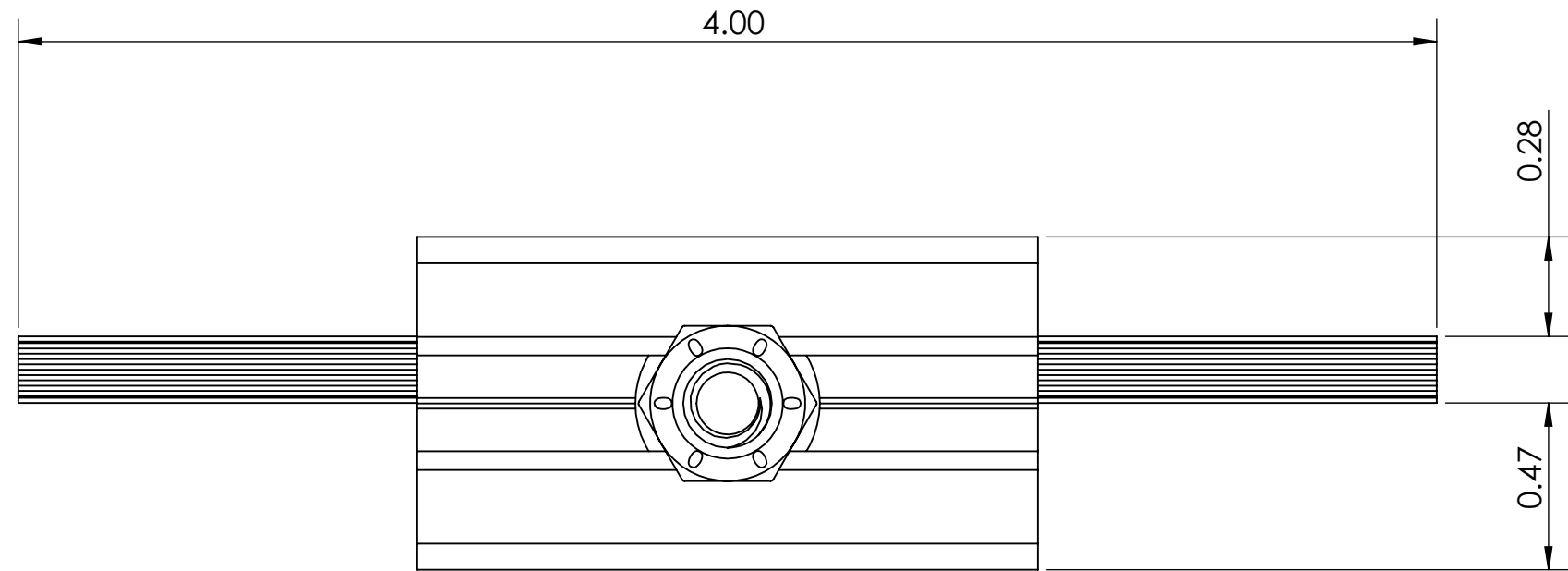
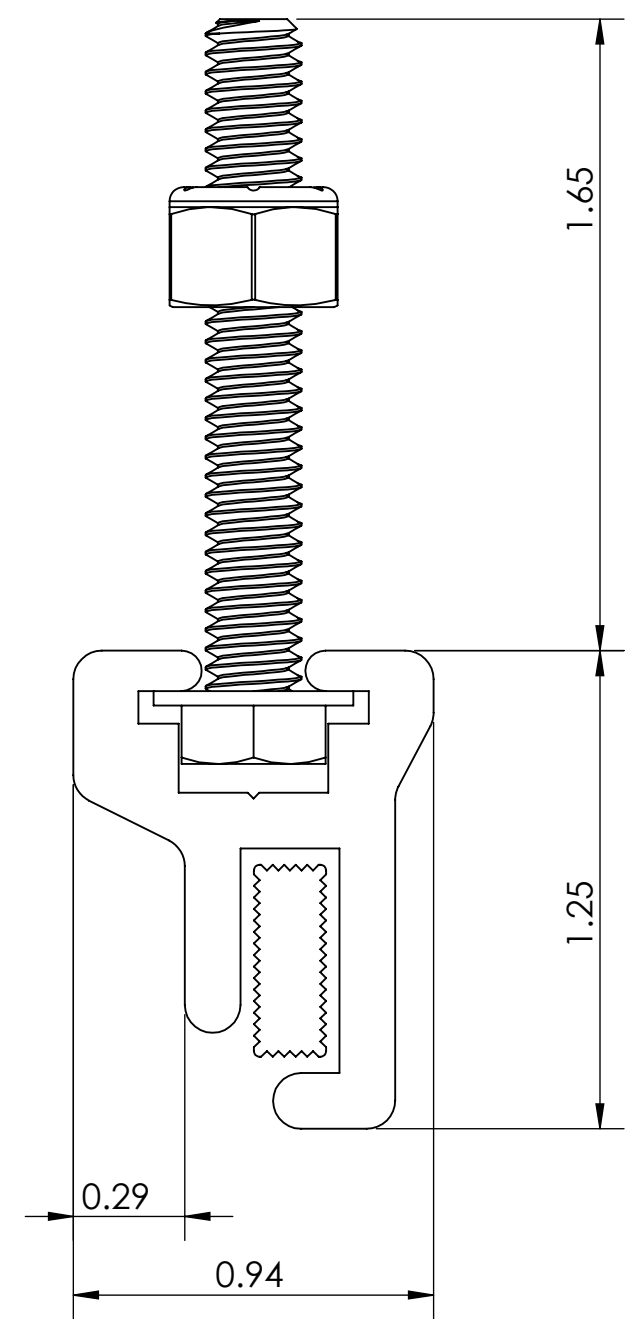


ISO VIEW
(W/ FLEX FACE VINYL)

EXCELLART SIGN PRODUCTS, LLC. 1654 S. LONE ELM RD. OLATHE, KS 66061 (800) 627-9044 SALES@EXCELLART.COM WWW.EXCELLART.COM		UNLESS OTHERWISE SPECIFIED: DIMENSIONS ARE IN INCHES TOLERANCES: FRAC = ± 1/32" X.XX = ± 0.03 X.XXX = ± 0.010 ANGULAR: MACH ± 1° BEND ± 2°		TITLE: ESP-UNIVERSAL FLEX CLIP
		PROPRIETARY AND CONFIDENTIAL THE INFORMATION CONTAINED IN THIS DRAWING IS THE SOLE PROPERTY OF EXCELLART SIGN PRODUCTS, LLC. ANY REPRODUCTION IN PART OR AS A WHOLE WITHOUT THE WRITTEN PERMISSION OF EXCELLART SIGN PRODUCTS, LLC IS PROHIBITED.		DESCRIPTION: ESP1280400 MATERIAL:
		DRAWN BY: EXCELLART	APPROVED BY:	REV A
		SIZE C	WEIGHT (LBS): 0.14 FINISH:	SCALE: 2:1 SHEET 1 OF 2



FRONT VIEW



TOP VIEW

EXCELLART SIGN PRODUCTS, LLC. 1654 S. LONE ELM RD. OLATHE, KS 66061 (800) 627-9044 SALES@EXCELLART.COM WWW.EXCELLART.COM		UNLESS OTHERWISE SPECIFIED: DIMENSIONS ARE IN INCHES TOLERANCES FRAC = ± 1/32" X.XX = ± 0.03 X.XXX = ± 0.010 ANGULAR: MACH ± 1° BEND ± 2°		TITLE: ESP-UNIVERSAL FLEX CLIP	
THE INFORMATION CONTAINED IN THIS DRAWING IS THE SOLE PROPERTY OF EXCELLART SIGN PRODUCTS, LLC. ANY REPRODUCTION IN PART OR AS A WHOLE WITHOUT THE WRITTEN PERMISSION OF EXCELLART SIGN PRODUCTS, LLC IS PROHIBITED.		DRAWN BY: EXCELLART		APPROVED BY:	
		SIZE C	WEIGHT (LBS): 0.14	FINISH:	REV A
SCALE: 2:1				SHEET 2 OF 2	