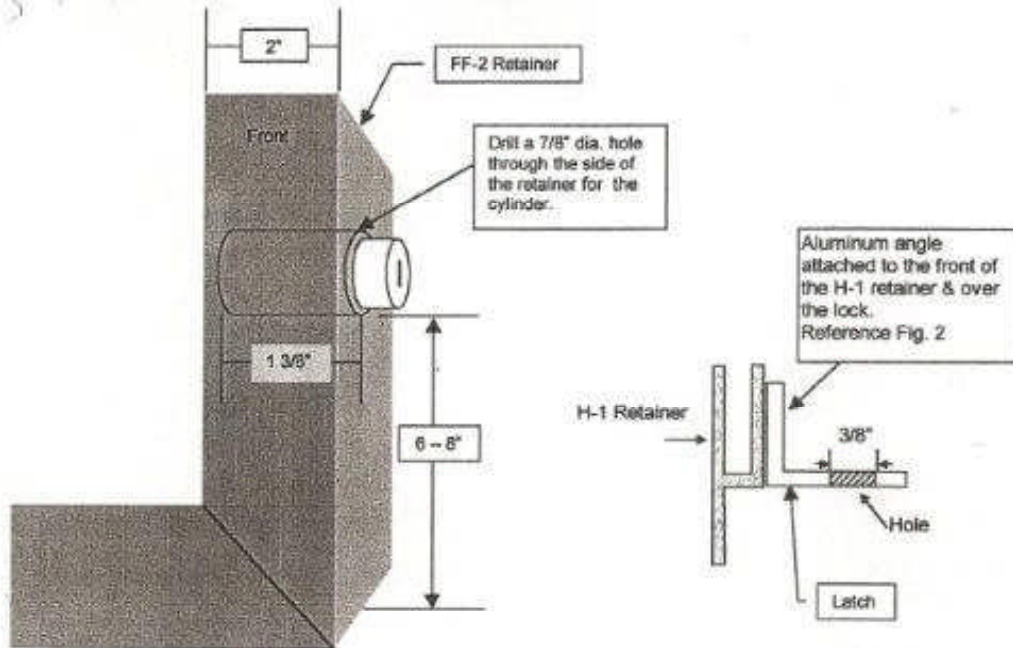


Vandal Cover Lock Assembly

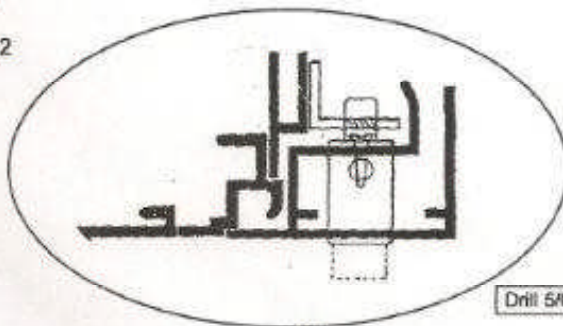


To attach pin lock, measure 6" to 8" up from the bottom of the cabinet. Drill 7/8" Dia. hole for the cylinder through the FF-2 retainer. Attach latch for the pin lock to the H-1 or H - 1.5 retainer. Drill a 3/8" hole for the pin (as pictured) to match up with the pin.

For best results:

A flat head screw should be used to fasten the lock to the retainer so there is enough clearance for the latch. This should be done on both sides of the cabinet to secure the vandal cover.

Figure 2



Drill 5/64" Dia. Pilot Hole for Screws.